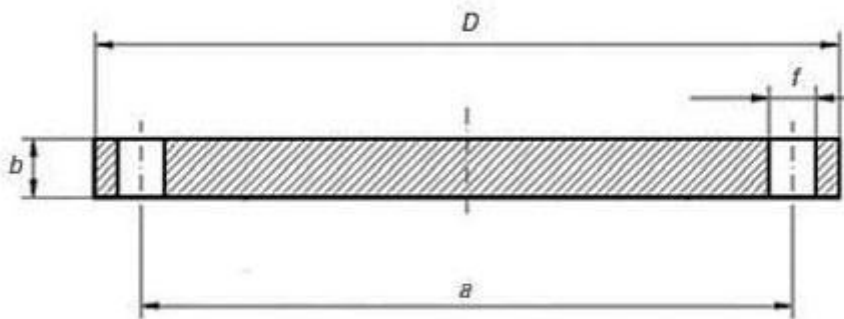


## UNI 6092 PN10 Blind Flange

### UNI 6092 PN10 BLIND FLANGE DIMENSIONS AND TECHNICAL DRAWING



### UNI 6092 PN10 BLIND FLANGE DIMENSIONS AND WEIGHT

UNI 6092 pn10 blind fange dimensions							
Rated Dia.	a	b	D	f	No. of holes	Thread of the screws	Weight in Kilogram
15	65	14	95	14	4	M 12	0,71
20	75	16	105	14	4	M 12	1,01
25	85	16	115	14	4	M 12	1,22
32	100	16	140	18	4	M 16	1,80
40	110	16	150	18	4	M 16	2,09
50	125	18	165	18	4	M 16	2,87

65	145	18	185	18	4	M 16	3,65
80	160	20	200	18	4	M 16	4,61
100	180	20	220	18	8	M 16	5,65
125	210	22	250	18	8	M 16	8,12
150	240	22	285	22	8	M 20	10,5
175	270	24	315	22	8	M 20	14,1
200	295	24	340	22	8	M 20	16,5
250	350	26	395	22	12	M 20	24,1
300	400	26	445	22	12	M 20	30,8
350	460	26	505	22	16	M 20	39,6
400	515	26	565	25	16	M 22	49,6
450	565	26	615	25	20	M 22	58,6
500	620	28	670	25	20	M 22	75,3

## UNI 6092 PN10 BLIND FLANGE INDUSTRIES AND APPLICATIONS

WIDELY USED IN THE INDUSTRIES

- Pumps, Valves, and vessels in manufacturing and food processing.
- Pipe connections in industrial waterworks.
- Heat exchangers and heating systems of all sizes.
- Mining support.
- Nuclear power systems.
- Plumbing and mechanical systems.
- Assemblies in the oil, gas, and petrochemical industries.
- Fire protection systems.