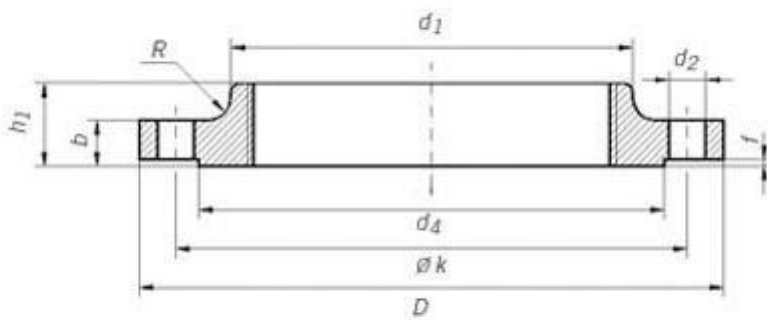


UNI 2254 PN16 Threaded Flange

UNI 2254 PN16 THREADED FLANGE DIMENSIONS AND TECHNICAL DRAWING



UNI 2254 PN16 THREADED FLANGE DIMENSIONS AND WEIGHT

UNI 2254 Pn16 Threaded Flange Dimensions														
Rated Dia.	d1	Flanges					Neck		Raised face (rf)		Screws			Weight in kg (7,85 Kg/dm3) Kilogram
		Thread	D	b	k	h1	d3	d4	f	Number	Thread	d2		
15	21,3	R 1/2	95	14	65	20	35	45	2	4	M 12	14	0,613	
20	26,9	R 3/4	105	16	75	24	45	58	2	4	M 12	14	0,91	
25	33,7	R 1	115	16	85	24	52	68	2	4	M 12	14	1,1	

32	42,4	R11/4	140	16	100	26	60	78	2	4	M 16	18	1,6
40	48,3	R11/2	150	16	110	26	70	88	3	4	M 16	18	1,78
50	60,3	R 2	165	18	125	28	85	102	3	4	M 16	18	2,43
65	76,1	R21/2	185	18	145	32	105	122	3	4	M 16	18	3,18
80	88,9	R 3	200	20	160	34	118	138	3	8	M 16	18	4,12
100	114,3	R 4	220	20	180	38	140	158	3	8	M 16	18	4,47
125	139,7	R 5	250	22	210	40	168	188	3	8	M 16	18	6,13
150	165,1	R 6	285	22	240	44	195	212	3	8	M 20	22	7,92

UNI 2254 PN16 THREADED FLANGE INDUSTRIES AND APPLICATIONS

WIDELY USED IN THE INDUSTRIES

- Pumps, Valves, and vessels in manufacturing and food processing.
- Pipe connections in industrial waterworks.
- Heat exchangers and heating systems of all sizes.
- Mining support.
- Nuclear power systems.
- Plumbing and mechanical systems.
- Assemblies in the oil, gas, and petrochemical industries.
- Fire protection systems.