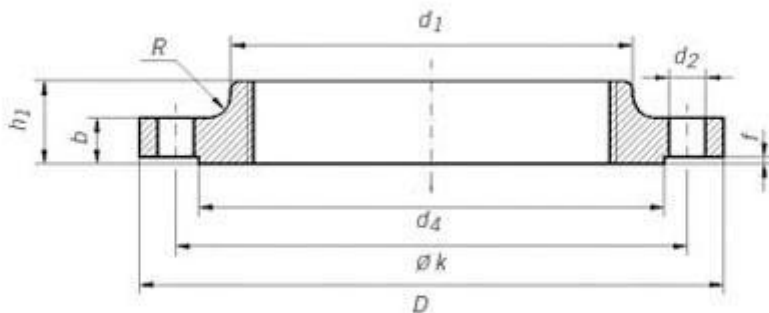


UNI 2253 PN6 Threaded Flange

UNI 2253 PN6 THREADED FLANGE DIMENSIONS AND TECHNICAL DRAWING



UNI 2253 PN6 THREADED FLANGE DIMENSIONS AND WEIGHT

Uni 2253 Pn6 Threaded Flange Dimensions													
Flanges				Neck		Raised face (RF)		Screws				Weight in kg (7,85 Kg/dm3)	
Rated Dia.	d1	Thread	D	b	k	h1	d3	d4	f	Number	Thread	d2	Kilogram
15	21,3	R 1/2	80	12	55	20	30	40	2	4	M 10	11	0,373
20	26,9	R 3/4	90	14	65	24	40	50	2	4	M 10	11	0,59

25	33,7	R 1	100	14	75	24	50	60	2	4	M 10	11	0,743
32	42,4	R11/4	120	14	90	26	60	70	2	4	M 12	14	1,05
40	48,3	R11/2	130	14	100	26	70	80	3	4	M 12	14	1,2
50	60,3	R 2	140	14	110	28	80	90	3	4	M 12	14	1,37
65	76,1	R21/2	160	14	130	32	100	110	3	4	M 12	14	1,92
80	88,9	R 3	190	16	150	34	110	128	3	4	M 16	18	2,82
100	114,3	R 4	210	16	170	38	130	148	3	4	M 16	18	3,19
125	139,7	R 5	240	18	200	40	160	178	3	8	M 16	18	4,47
150	165,1	R 6	265	18	225	44	185	202	3	8	M 16	18	5,3

UNI 2253 PN6 THREADED FLANGE INDUSTRIES AND APPLICATIONS

WIDELY USED IN THE INDUSTRIES

- Pumps, Valves, and vessels in manufacturing and food processing.
- Pipe connections in industrial waterworks.
- Heat exchangers and heating systems of all sizes.
- Mining support.
- Nuclear power systems.
- Plumbing and mechanical systems.
- Assemblies in the oil, gas, and petrochemical industries.
- Fire protection systems.