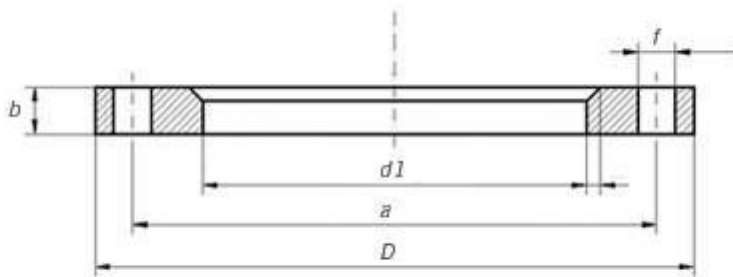


## SABS 1123 Backing Ring Flange

### SABS 1123 BACKING RING FLANGE DIMENSIONS, WEIGHT, AND TECHNICAL DRAWING



### SABS 1123 BACKING RING FLANGE DIMENSIONS

FLANGE DIMENSIONS & APPROXIMATE MASSES

| SABS 1123 T1000/3 BACKING RING FLANGE WITH HOT DIPPED GALVANIZED FOR HDPE PIPE |    |     |           |     |          |         |        |        |
|--|----|-----|-----------|-----|----------|---------|--------|--------|
| Pipe OD  | ID | OD  | Thickness | PCD | No Holes | Hole ID | Weight | Radius |
| mm   | mm | mm  | mm        | mm  |          | mm      | KG     | mm     |
| 40   |    | 140 | 10        | 100 | 4        | 18      |        |        |
| 50   |    | 150 | 10        | 110 | 4        | 18      |        |        |
| 63   |    | 165 | 12        | 125 | 4        | 18      |        |        |
| 75   |    | 185 | 12        | 145 | 4        | 18      |        |        |
| 90   |    | 200 | 12        | 160 | 8        | 18      |        |        |

|     |  |     |    |     |    |    |  |  |
|-----|--|-----|----|-----|----|----|--|--|
| 110 |  | 220 | 12 | 180 | 8  | 18 |  |  |
| 125 |  | 220 | 12 | 180 | 8  | 18 |  |  |
| 140 |  | 250 | 14 | 210 | 8  | 18 |  |  |
| 160 |  | 285 | 16 | 240 | 8  | 22 |  |  |
| 180 |  | 285 | 16 | 240 | 8  | 22 |  |  |
| 200 |  | 340 | 18 | 295 | 8  | 22 |  |  |
| 225 |  | 340 | 18 | 295 | 8  | 22 |  |  |
| 250 |  | 395 | 18 | 350 | 12 | 22 |  |  |
| 280 |  | 395 | 20 | 350 | 12 | 22 |  |  |
| 315 |  | 445 | 22 | 400 | 12 | 22 |  |  |
| 355 |  | 505 | 25 | 460 | 16 | 22 |  |  |
| 400 |  | 565 | 25 | 515 | 16 | 26 |  |  |
| 450 |  | 615 | 30 | 565 | 20 | 26 |  |  |
| 500 |  | 670 | 30 | 620 | 20 | 26 |  |  |
| 560 |  | 730 | 35 | 675 | 20 | 26 |  |  |
| 630 |  | 835 | 36 | 780 | 20 | 26 |  |  |

| <b>BS T/D BACKING RING FLANGE WITH HOT DIPPPD GALVANIZED FOR HDPE PIPE</b> |           |           |                  |            |                 |                |               |               |
|--|-----------|-----------|------------------|------------|-----------------|----------------|---------------|---------------|
| <b>Pipe OD</b>   | <b>ID</b> | <b>OD</b> | <b>Thickness</b> | <b>PCD</b> | <b>No Holes</b> | <b>Hole ID</b> | <b>Weight</b> | <b>Radius</b> |
| <b>mm</b>  | <b>mm</b> | <b>mm</b> | <b>mm</b>        | <b>mm</b>  |                 | <b>mm</b>      | <b>KG</b>     | <b>mm</b>     |
| 40   |           | 120       | 6                | 87.3       | 4               | 14             |               |               |
| 50   |           | 133.4     | 6                | 98.4       | 4               | 14             |               |               |
| 63   |           | 152.4     | 8                | 114.3      | 4               | 18             |               |               |
| 75   |           | 165.1     | 8                | 127        | 4               | 18             |               |               |
| 90   |           | 184.1     | 10               | 146        | 4               | 18             |               |               |
| 110  |           | 215.9     | 10               | 177.8      | 4               | 18             |               |               |
| 125  |           | 215.9     | 10               | 177.8      | 4               | 18             |               |               |
| 125 PVC  |           | 250       | 13               | 209.6      | 8               | 18             |               |               |
| 140  |           | 250       | 13               | 209.6      | 8               | 18             |               |               |
| 160  |           | 279.4     | 13               | 235        | 8               | 18             |               |               |
| 180  |           | 279.4     | 13               | 235        | 8               | 18             |               |               |
| 200  |           | 336.6     | 13               | 292.1      | 8               | 18             |               |               |
| 225  |           | 336.6     | 13               | 292.1      | 8               | 18             |               |               |
| 250  |           | 406.4     | 16               | 355.6      | 8               | 22             |               |               |

|     |  |       |    |       |    |    |  |  |
|-----|--|-------|----|-------|----|----|--|--|
| 280 |  | 406.4 | 16 | 355.6 | 8  | 22 |  |  |
| 315 |  | 457.2 | 20 | 406.4 | 12 | 22 |  |  |
| 355 |  | 527.1 | 22 | 469.9 | 12 | 26 |  |  |
| 400 |  | 577.9 | 22 | 520.7 | 12 | 26 |  |  |
| 450 |  | 641.4 | 25 | 584.2 | 12 | 26 |  |  |
| 500 |  | 705   | 29 | 641.4 | 16 | 26 |  |  |
| 560 |  | 825.5 | 30 | 755.7 | 16 | 26 |  |  |
| 630 |  | 825.5 | 32 | 755.7 | 16 | 26 |  |  |

## SABS 1123 BACKING RING FLANGE INDUSTRIES AND APPLICATIONS WIDELY USED IN THE INDUSTRIES

- Pumps, Valves, and vessels in manufacturing and food processing.
- Pipe connections in industrial waterworks.
- Heat exchangers and heating systems of all sizes.
- Mining support.
- Nuclear power systems.
- Plumbing and mechanical systems.
- Assemblies in the oil, gas, and petrochemical industries.
- Fire protection systems.