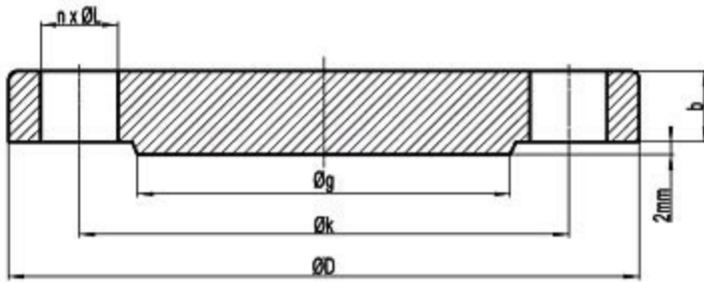


MSS SP 44 Class 900 Flanges Dimensions

MSS SP 44 CLASS 900 FLANGES DIMENSIONS



Series A Class 900 Flanges Dimensions

Normal Size	Outside Daimeter	Thick.		Outside Daimeter of RF	Diameter at Base	Bore	LTH	Diameter Bevel	Drilling	
		WN	BLRF						Circle Of Bolt	Length Of Bol
	O	C	C	R	X	B	Y	A		-1
26	42.75	5.5	6.31	29.5	30.5	-	11.25	26	37.5	18.75
28	46	5.62	6.75	31.5	32.75		11.75	28	40.25	19.75
30	48.5	5.88	7.18	33.75	35		12.25	30	42.75	20.5
32	51.75	6.25	7.62	36	37.25		13	32	45.5	22
34	55	6.5	8.06	38	39.62		13.75	34	48.25	23
36	57.5	6.75	8.44	40.25	41.88		14.25	36	50.75	23.75

38	57.5	7.5	8.5	43.25	42.25
40	59.5	7.75	8.81	45.75	44.38
42	61.5	8.12	9.12	47.75	46.31
44	64.88	8.44	9.56	50	48.62
46	68.25	8.88	10.06	52.5	50.88
48	70.25	9.19	10.38	54.5	52.88

13.88	38	50.75	24.5
14.31	40	52.75	25
14.62	42	54.75	25.75
15.38	44	57.62	27
16.18	46	60.5	28.5
16.5	48	62.5	29

MSS SP 44 CLASS 900 FLANGES INDUSTRIES AND APPLICATIONS
WIDELY USED IN THE INDUSTRIES

- Pumps, Valves, and vessels in manufacturing and food processing.
- Pipe connections in industrial waterworks.
- Heat exchangers and heating systems of all sizes.
- Mining support.
- Nuclear power systems.
- Plumbing and mechanical systems.
- Assemblies in the oil, gas, and petrochemical industries.
- Fire protection systems.

marcelforged.com