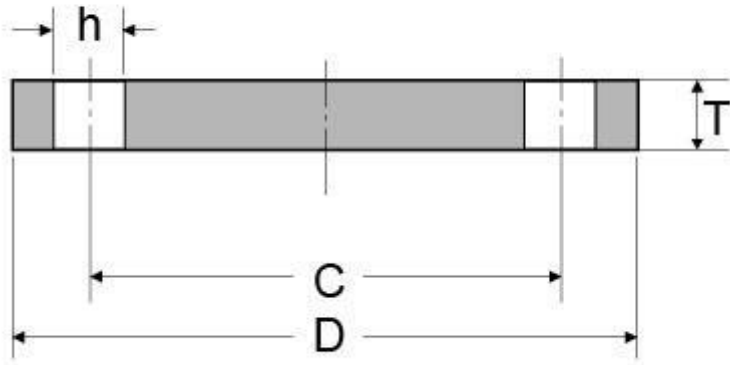


## EN1092-1 PN6 Type 05 Blind Flange

### EN1092-1 PN6 TYPE 05 BLIND FLANGE DIMENSIONS AND TECHNICAL DRAWING



### EN1092-1 PN6 TYPE 05 BLIND FLANGE DIMENSIONS AND WEIGHT

Rated Diameter	Flange Dimension			Screws Parameter			Weight Flange KG/PCS
	C	D	T	h	Thread	Bolt holes	
15	55	80	12	11	M10	4	0,438
20	65	90	14	11	M10	4	0,657
25	75	100	14	11	M10	4	0,821
32	90	120	14	14	M12	4	1,180
40	100	130	14	14	M12	4	1,390

50	110	140	14	14	M12	4	1,620
65	130	160	14	14	M12	4	2,140
80	150	190	16	18	M16	4	3,430
100	170	210	16	18	M16	4	4,220
125	200	240	18	18	M16	8	6,100
150	225	265	18	18	M16	8	7,510
200	280	320	20	18	M16	8	12,300
250	335	375	22	18	M16	12	18,500
300	395	440	22	22	M20	12	25,500
350	445	490	22	22	M20	12	31,800
400	495	540	22	22	M20	16	38,500
450	550	595	24	22	M20	16	51,200
500	600	645	24	22	M20	20	60,100
600	705	755	30	26	M24	20	103,000
700	810	860	40	26	M24	24	178,000
800	920	975	44	30	M27	24	252,000
900	1020	1075	48	30	M27	24	336,000
1000	1120	1175	52	30	M27	28	435,000
1200	1340	1405	60	33	M30	32	717,000
1400	1560	1630	68	36	M33	36	1.094,000
1600	1760	1830	76	36	M33	40	1.545,000
1800	1970	2045	84	39	M36	44	2.131,000
2000	2180	2265	92	42	M39	48	2.862,000

## EN1092-1 PN6 TYPE 05 BLIND FLANGE INDUSTRIES AND APPLICATIONS WIDELY USED IN THE INDUSTRIES

- Pumps, Valves, and vessels in manufacturing and food processing.
- Pipe connections in industrial waterworks.
- Heat exchangers and heating systems of all sizes.
- Mining support.
- Nuclear power systems.
- Plumbing and mechanical systems.
- Assemblies in the oil, gas, and petrochemical industries.
- Fire protection systems.