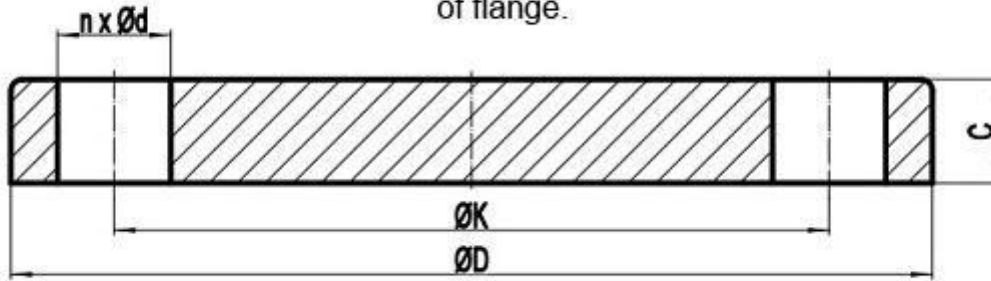


EN1092-1 PN40 Type 05 Blind Flange

EN1092-1 PN40 TYPE 05 BLIND FLANGE DIMENSIONS AND TECHNICAL DRAWING

The technical drawing for EN 1092-1 Type 05 blind flange with flat facing (FF).
 D: outside diameter of flange; K: diameter of bolt circle; n: number of bolts; d:
 diameter of bolt hole; C: flange thickness; Bolt: bolting size; W: mass or weight
 of flange.



EN1092-1 PN40 TYPE 05 BLIND FLANGE DIMENSIONS AND WEIGHT

| DN | D mm | C mm | W kg |
|----|---------|---------|---------|
| 10 | 90 | 16 | 0,722 |
| 15 | 95 | 16 | 0,813 |
| 20 | 105 | 18 | 1,14 |
| 25 | 115 | 18 | 1,38 |
| 32 | 140 | 18 | 2,03 |
| 40 | 150 | 18 | 2,35 |

| DN | D mm | C mm | W kg |
|-----------|-----------------|-----------------|-----------------|
| 50 | 165 | 20 | 3,20 |
| 65 | 185 | 22 | 4,29 |
| 80 | 200 | 24 | 5,54 |
| 100 | 235 | 24 | 7,60 |
| 125 | 270 | 26 | 10,8 |
| 150 | 300 | 28 | 14,6 |
| 200 | 375 | 36 | 28,8 |
| 250 | 450 | 38 | 44,4 |
| 300 | 515 | 42 | 64,2 |
| 350 | 580 | 46 | 89,5 |
| 400 | 660 | 50 | 127 |
| 450 | 685 | 57 | 154 |
| 500 | 755 | 57 | 188 |
| 600 | 890 | 72 | 331 |

| DN | K mm | n | d mm | Bolt |
|-----------|-----------------|----------|-----------------|-------------|
| 10 | 60 | 4 | 14 | M12 |
| 15 | 65 | 4 | 14 | M12 |
| 20 | 75 | 4 | 14 | M12 |
| 25 | 85 | 4 | 14 | M12 |
| 32 | 100 | 4 | 18 | M16 |
| 40 | 110 | 4 | 18 | M16 |
| 50 | 125 | 4 | 18 | M16 |
| 65 | 145 | 8 | 18 | M16 |
| 80 | 160 | 8 | 18 | M16 |
| 100 | 190 | 8 | 22 | M20 |
| 125 | 220 | 8 | 26 | M24 |
| 150 | 250 | 8 | 26 | M24 |
| 200 | 320 | 12 | 30 | M27 |
| 250 | 385 | 12 | 33 | M30 |
| 300 | 450 | 16 | 33 | M30 |
| 350 | 510 | 16 | 36 | M33 |

| DN | K mm | n | d mm | Bolt |
|-----------|-----------------|----------|-----------------|-------------|
| 400 | 585 | 16 | 39 | M36 |
| 450 | 610 | 20 | 39 | M36 |
| 500 | 670 | 20 | 42 | M39 |
| 600 | 795 | 20 | 48 | M45 |

EN1092-1 PN40 TYPE 05 BLIND FLANGE INDUSTRIES AND APPLICATIONS

WIDELY USED IN THE INDUSTRIES

- Pumps, Valves, and vessels in manufacturing and food processing.
- Pipe connections in industrial waterworks.
- Heat exchangers and heating systems of all sizes.
- Mining support.
- Nuclear power systems.
- Plumbing and mechanical systems.
- Assemblies in the oil, gas, and petrochemical industries.
- Fire protection systems.

marcelforged.com