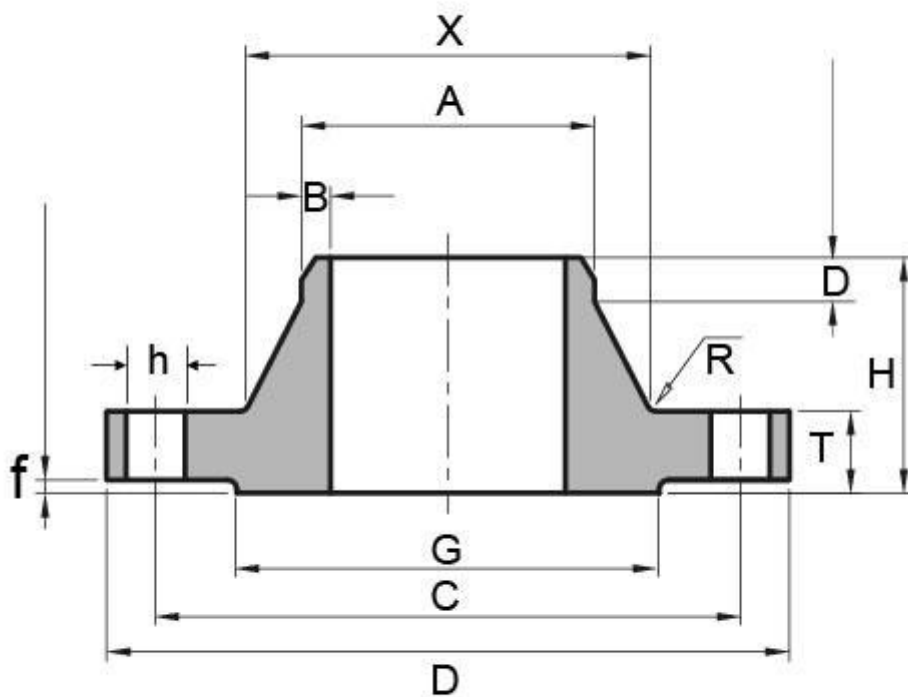


EN1092-1 PN25 Type 11 Welding Neck Flan

EN1092-1 PN25 TYPE 11 WELDING NECK FLANGE DIMENSIONS AND TECHNICAL DRAWING



EN1092-1 PN25 TYPE 11 WELDING NECK FLANGE DIMENSIONS AND WEIGHT

Rated Diameter	Flange Dimension	Neck Size	Raised Face	Screws Parameter	Wei Flan

	A	C	D	T	H	X	B	R	D	G	f	h	Thread	Bolt holes	KG/
200	219,1	310	360	30	80	244	6,3	10	16	278	3	26	M24	12	17,10
250	273	370	425	32	88	298	7,1	12	18	335	3	30	M27	12	24,3
300	323,9	430	485	34	92	352	8,0	12	18	395	4	30	M27	16	31,8
350	355,6	490	555	38	100	398	8,0	12	20	450	4	33	M30	16	48,8
400	406,4	550	620	40	110	452	8,8	12	20	505	4	36	M33	16	63,3
450	457	600	670	46	110	500	8,8	12	20	550	4	36	M33	20	76,0
500	508	660	730	48	125	558	10,0	12	20	615	4	36	M33	20	97,0
600	610	770	845	48	125	660	11,0	12	20	720	5	39	M36	20	121,0
700	711	875	960	50	129	760	14,2	12	20	820	5	42	M39	24	155,
800	813	990	1085	53	138	864	16,0	12	22	930	5	48	M45	24	205
900	914	1090	1185	57	148	968	17,5	12	24	1030	5	48	M45	28	249
1000	1016	1210	1320	63	160	1070	20,0	16	24	1140	5	56	M52	28	338,

EN1092-1 PN25 TYPE 11 WELDING NECK FLANGE INDUSTRIES AND APPLICATIONS

WIDELY USED IN THE INDUSTRIES

- Pumps, Valves, and vessels in manufacturing and food processing.
- Pipe connections in industrial waterworks.
- Heat exchangers and heating systems of all sizes.
- Mining support.
- Nuclear power systems.
- Plumbing and mechanical systems.
- Assemblies in the oil, gas, and petrochemical industries.
- Fire protection systems.