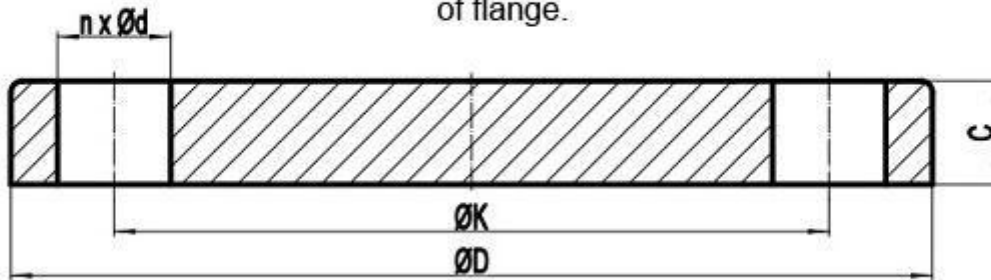


EN1092-1 PN25 Type 05 Blind Flange

EN1092-1 PN25 TYPE 05 BLIND FLANGE DIMENSIONS AND TECHNICAL DRAWING

The technical drawing for EN 1092-1 Type 05 blind flange with flat facing (FF).
 D: outside diameter of flange; K: diameter of bolt circle; n: number of bolts; d: diameter of bolt hole; C: flange thickness; Bolt: bolting size; W: mass or weight of flange.



EN1092-1 PN25 TYPE 05 BLIND FLANGE DIMENSIONS AND WEIGHT

DN	D mm	C mm	W kg
10	90	16	0,722
15	95	16	0,813
20	105	18	1,14
25	115	18	1,38
32	140	18	2,03
40	150	18	2,35

DN	D mm	C mm	W kg
50	165	20	2,88
65	185	22	3,51
80	200	24	4,61
100	235	24	5,65
125	270	26	8,13
150	300	28	10,5
200	360	30	22,5
250	425	32	33,5
300	485	34	46,3
350	555	38	68,1
400	620	40	89,7
450	670	50	130
500	730	51	159
600	845	66	278
700	960	–	–
800	1085	–	–
900	1185	–	–
1000	1320	–	–

DN	K mm	n	d mm	Bolt
10	60	4	14	M12
15	65	4	14	M12
20	75	4	14	M12
25	85	4	14	M12
32	100	4	18	M16
40	110	4	18	M16
50	125	4	18	M16
65	145	8	18	M16
80	160	8	18	M16
100	190	8	22	M20
125	220	8	26	M24
150	250	8	26	M24

	K		d		DN
--	----------	--	----------	--	-----------

200	310	12	26	M24
250	370	12	30	M27
300	430	16	30	M27
350	490	16	33	M30
400	550	16	36	M33
450	600	20	36	M33
500	660	20	36	M33
600	770	20	39	M36
700	875	24	42	M39
800	990	24	48	M45
900	1090	28	48	M45
1000	1210	28	56	M52

EN1092-1 PN25 TYPE 05 BLIND FLANGE INDUSTRIES AND APPLICATIONS

WIDELY USED IN THE INDUSTRIES

- Pumps, Valves, and vessels in manufacturing and food processing.
- Pipe connections in industrial waterworks.
- Heat exchangers and heating systems of all sizes.
- Mining support.
- Nuclear power systems.
- Plumbing and mechanical systems.
- Assemblies in the oil, gas, and petrochemical industries.
- Fire protection systems.