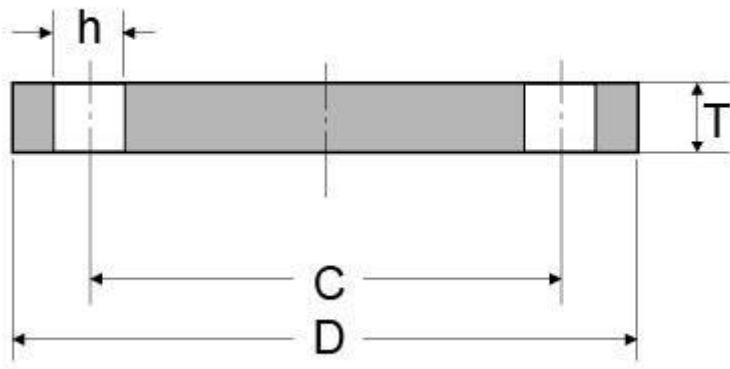


## EN1092-1 PN16 Type 05 Blind Flange

### EN1092-1 PN16 TYPE 05 BLIND FLANGE DIMENSIONS AND TECHNICAL DRAWING



### EN1092-1 PN16 TYPE 05 BLIND FLANGE DIMENSIONS DIMENSIONS AND WEIGHT

Rated Diameter	Flange Dimension			Screws Parameter			Weight Flange KG/PCS
	C	D	T	h	Thread	Bolt holes	
15	65	95	16	14	M12	4	0,813
20	75	105	18	14	M12	4	1,140
25	85	115	18	14	M12	4	1,380
32	100	140	18	18	M16	4	2,030
40	110	150	18	18	M16	4	2,350

50	125	165	18	18	M16	4	2,880
65	145	185	18	18	M16	4	3,643
80	160	200	20	18	M16	8	4,610
100	180	220	20	18	M16	8	5,650
125	210	250	22	18	M16	8	8,130
150	240	285	22	22	M20	8	10,500
200	295	340	24	22	M20	12	16,200
250	355	405	26	26	M24	12	25,000
300	410	460	28	26	M24	12	35,100
350	470	520	30	26	M24	16	48,000
400	525	580	32	30	M27	16	63,500
450	585	640	40	30	M27	20	96,600
500	650	715	44	33	M30	20	133,000
600	770	840	54	36	M33	20	226,000
700	840	910	58	36	M33	24	285,000
800	950	1025	62	39	M36	24	388,000
900	1050	1125	64	39	M36	28	483,000
1000	1170	1255	68	42	M39	28	640,000

## EN1092-1 PN16 TYPE 05 BLIND FLANGE INDUSTRIES AND APPLICATIONS WIDELY USED IN THE INDUSTRIES

- Pumps, Valves, and vessels in manufacturing and food processing.
- Pipe connections in industrial waterworks.
- Heat exchangers and heating systems of all sizes.
- Mining support.
- Nuclear power systems.
- Plumbing and mechanical systems.
- Assemblies in the oil, gas, and petrochemical industries.
- Fire protection systems.