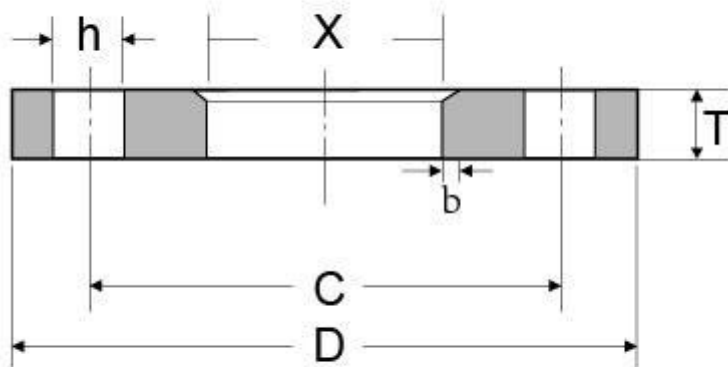


## EN1092-1 PN16 Type 02 Plate Flange

### EN1092-1 PN16 TYPE 02 PLATE FLANGE DIMENSIONS AND TECHNICAL DRAWING



### EN1092-1 PN16 TYPE 02 PLATE FLANGE DIMENSIONS AND WEIGHT

Rated Diameter	Flange			Screws					Weight/PCS Flange KG
	X	C	D	T	b	h	Thread	Bolt holes	
15	25	65	95	14	3	14	M12	4	0,655
20	31	75	105	16	4	14	M12	4	0,913
25	38	85	115	16	4	14	M12	4	1,081
32	47	100	140	18	5	18	M16	4	1,781
40	53	110	150	18	5	18	M16	4	2,035

50	65	125	165	20	5	18	M16	4	2,668
65	81	145	185	20	6	18	M16	4	3,241
80	94	160	200	20	6	18	M16	8	3,512
100	120	180	220	22	6	18	M16	8	4,247
125	145	210	250	22	6	18	M16	8	5,258
150	174	240	285	24	6	22	M20	8	6,945
200	226	295	340	26	6	22	M20	12	9,383
250	281	355	405	29	8	26	M24	12	13,717
300	333	410	460	32	8	26	M24	12	18,213
350	365	470	520	35	8	26	M24	16	27,184
400	416	525	580	38	8	30	M27	16	34,789
450	467	585	640	42	8	30	M27	20	44,793
500	519	650	715	46	8	33	M30	20	62,227
600	622	770	840	55	8	36	M33	20	98,983
700	721	840	910	63	8	36	M33	24	107,32
800	824	950	1025	74	8	39	M36	24	152,44
900	926	1050	1125	82	8	39	M36	28	184,25
1000	1030	1170	1255	90	8	42	M39	28	257,09

**EN1092-1 PN16 TYPE 02 PLATE FLANGE INDUSTRIES AND APPLICATIONS  
WIDELY USED IN THE INDUSTRIES**

- Pumps, Valves, and vessels in manufacturing and food processing.
- Pipe connections in industrial waterworks.
- Heat exchangers and heating systems of all sizes.
- Mining support.
- Nuclear power systems.
- Plumbing and mechanical systems.
- Assemblies in the oil, gas, and petrochemical industries.
- Fire protection systems.