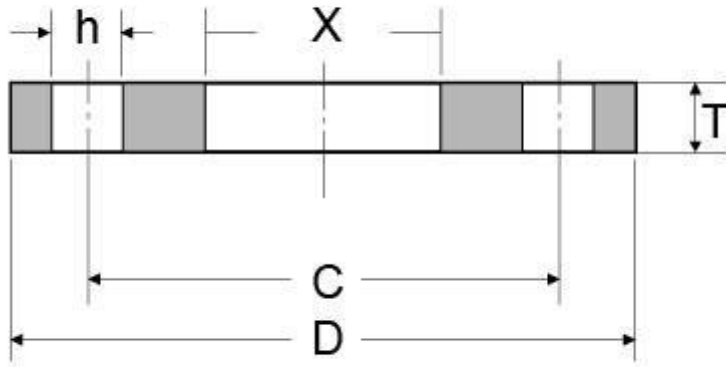


EN1092-1 PN10 Type 01 Plate Flange

EN1092-1 PN10 TYPE 01 PLATE FLANGE DIMENSIONS AND TECHNICAL DRAWING



EN1092-1 PN10 TYPE 01 PLATE FLANGE DIMENSIONS DIMENSIONS AND WEIGHT

| Rated Diameter | Pipe | Flange | | | | | Screws | | | Weight/KG Flange |
|----------------|-------|--------|-----|-----|----|----|--------|------------|--------|------------------|
| | | X | C | D | T | h | Thread | Bolt holes | KG | |
| 200 | 219,1 | 221,5 | 295 | 340 | 24 | 22 | M20 | 8 | 9,244 | |
| 250 | 273,0 | 276,5 | 350 | 395 | 26 | 22 | M20 | 12 | 11,788 | |
| 300 | 323,9 | 327,5 | 400 | 445 | 26 | 22 | M20 | 12 | 13,578 | |
| 350 | 355,6 | 359,5 | 460 | 505 | 30 | 22 | M20 | 16 | 21,766 | |
| 400 | 406,4 | 411,0 | 515 | 565 | 32 | 26 | M24 | 16 | 27,436 | |

| | | | | | | | | | |
|------|--------|--------|------|------|----|----|-----|----|---------|
| 450 | 457,2 | 462,0 | 565 | 615 | 36 | 26 | M24 | 20 | 33,470 |
| 500 | 508,0 | 513,5 | 620 | 670 | 38 | 26 | M24 | 20 | 40,103 |
| 600 | 610,0 | 616,5 | 725 | 780 | 42 | 30 | M27 | 20 | 54,297 |
| 700 | 711,0 | 714,2 | 840 | 895 | 50 | 30 | M27 | 24 | 82,777 |
| 800 | 813,0 | 815,8 | 950 | 1015 | 56 | 33 | M30 | 24 | 116,534 |
| 900 | 914,0 | 917,4 | 1050 | 1115 | 62 | 33 | M30 | 28 | 141,425 |
| 1000 | 1016,0 | 1019,0 | 1160 | 1230 | 70 | 36 | M33 | 28 | 188,561 |
| 1200 | 1219,0 | 1224,0 | 1380 | 1455 | 83 | 39 | M36 | 32 | 290,884 |

EN1092-1 PN10 TYPE 01 PLATE FLANGE INDUSTRIES AND APPLICATIONS

WIDELY USED IN THE INDUSTRIES

- Pumps, Valves, and vessels in manufacturing and food processing.
- Pipe connections in industrial waterworks.
- Heat exchangers and heating systems of all sizes.
- Mining support.
- Nuclear power systems.
- Plumbing and mechanical systems.
- Assemblies in the oil, gas, and petrochemical industries.
- Fire protection systems.