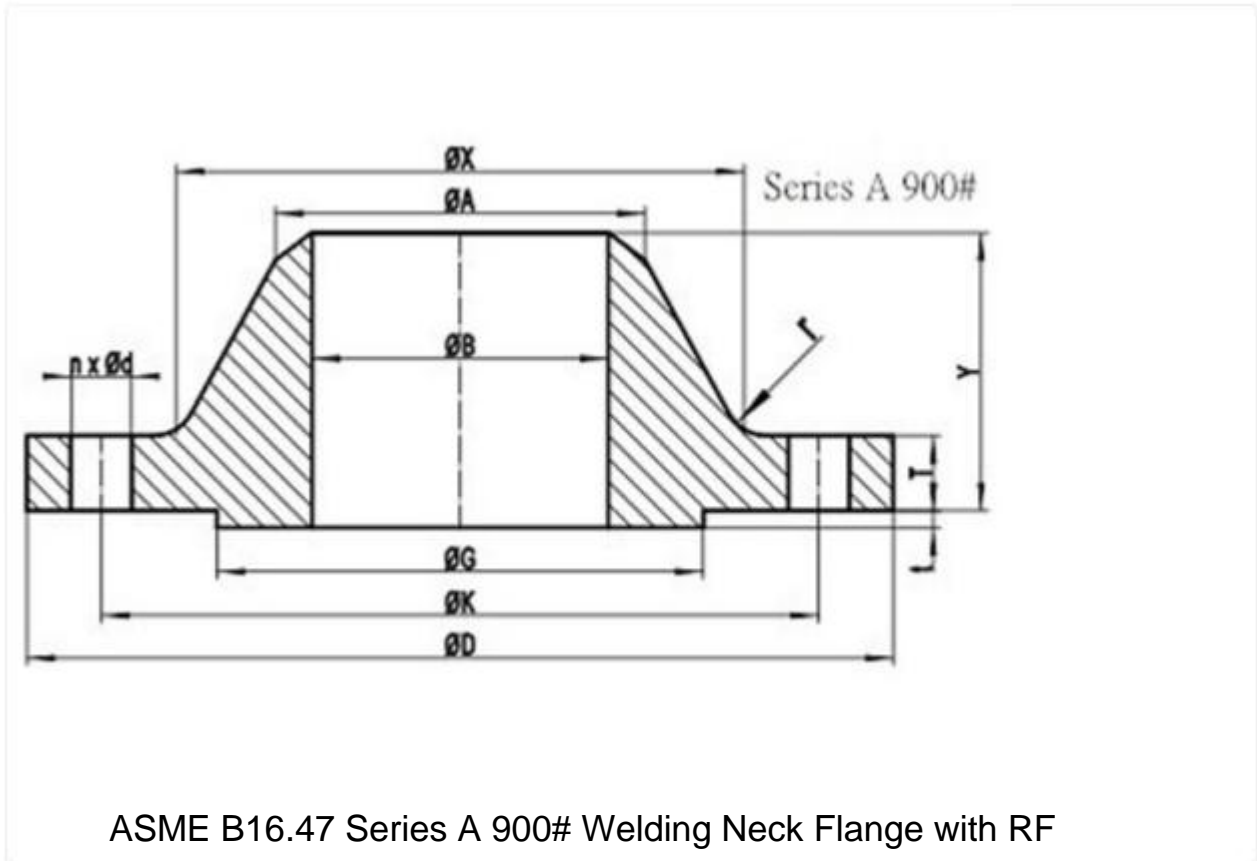
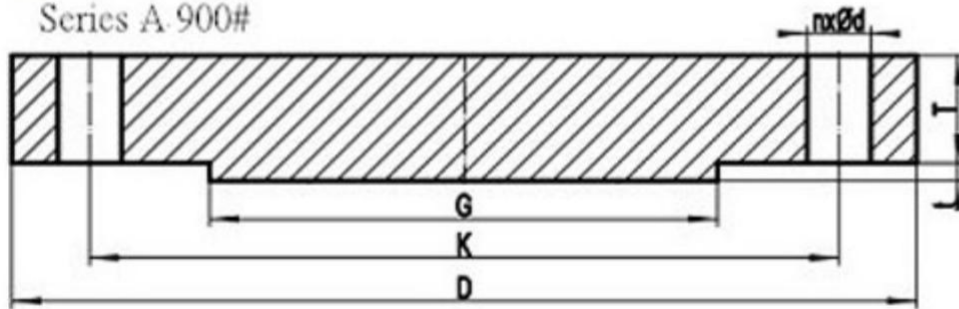


ASME B16 47 Class 900 Series A Flange

ASME B16.47 SERIES A FLANGES CLASS 900 DIMENSIONS AND TECHNICAL DRAWINGS



Series A 900#



ASME B16.47 Series A Class 900 Blind Flange with RF

900# B16.47 SERIES A FLANGES DIMENSIONS

B16.47 DIMENSIONS IN MM

NPS	D	K	G	X
26"	1085	952.5	749	775
28"	1170	1022.4	800	832
30"	1230	1085.8	857	889
32"	1315	1155.7	914	946
34"	1395	1225.6	965	1006
36"	1460	1289.0	1022	1064
38"	1460	1289.0	1099	1073
40"	1510	1339.8	1162	1127
42"	1560	1390.6	1213	1176
44"	1650	1463.7	1270	1235
46"	1735	1536.7	1334	1292
48"	1785	1587.5	1384	1343
50"	-	-	-	-
52"	-	-	-	-
54"	-	-	-	-
56"	-	-	-	-
58"	-	-	-	-

NPS	D	K	G	X
60"	–	–	–	–

General Note:

- All dimensions are in MM.
- D: outside diameter of fange.
- K: diameter of bolt circle.
- G: diameter of raised face.
- X: diameter of hub of fange.

NPS	A	TBL	TWN	Y
26"	660.4	160.4	139.7	286
28"	711.2	171.5	142.9	298
30"	762.0	182.6	149.3	311
32"	812.8	193.7	158.8	330
34"	863.6	204.8	165.1	349
36"	914.4	214.4	171.5	362
38"	965.2	215.9	190.5	352
40"	1016.0	223.9	196.9	364
42"	1066.8	231.8	206.4	371
44"	1117.6	242.9	214.4	391
46"	1168.4	255.6	225.5	411
48"	1219.2	263.6	233.4	419
50"	–	–	–	–
52"	–	–	–	–
54"	–	–	–	–
56"	–	–	–	–
58"	–	–	–	–
60"	–	–	–	–

General Note:

- All dimensions are in MM.
- A: Diameter of hub top of WN.
- TBL: minimum thickness of blind fange.
- TWN: minimum thickness of WN fange.
- Y: length through hub of WN.
- t: 7mm height of RF for Class 900 Series A fange.

NPS	n	d	l	r
26"	20	2-7/8	2-3/4	11
28"	20	3-1/8	3	13
30"	20	3-1/8	3	13
32"	20	3-3/8	3-1/4	13
34"	20	3-5/8	3-1/2	14
36"	20	3-5/8	3-1/2	14
38"	20	3-5/8	3-1/2	19
40"	24	3-5/8	3-1/2	21
42"	24	3-5/8	3-1/2	21
44"	24	3-7/8	3-3/4	22
46"	24	4-1/8	4	22
48"	24	4-1/8	4	24
50"	–	–	–	–
52"	–	–	–	–
54"	–	–	–	–
56"	–	–	–	–
58"	–	–	–	–
60"	–	–	–	–

General Note:

- n: number of bolt holes.
- d: diameter of bolt hole.
- l: diameter of bolt.
- r: minimum fillet radius for WN.
- d and l are in inch units, while r is in mm unit.

ASME B16.47 SERIES A CLASS 900 FLANGES INDUSTRIES AND APPLICATIONS

WIDELY USED IN THE INDUSTRIES

- Pumps, Valves, and vessels in manufacturing and food processing.
- Pipe connections in industrial waterworks.
- Heat exchangers and heating systems of all sizes.
- Mining support.
- Nuclear power systems.
- Plumbing and mechanical systems.
- Assemblies in the oil, gas, and petrochemical industries.
- Fire protection systems.