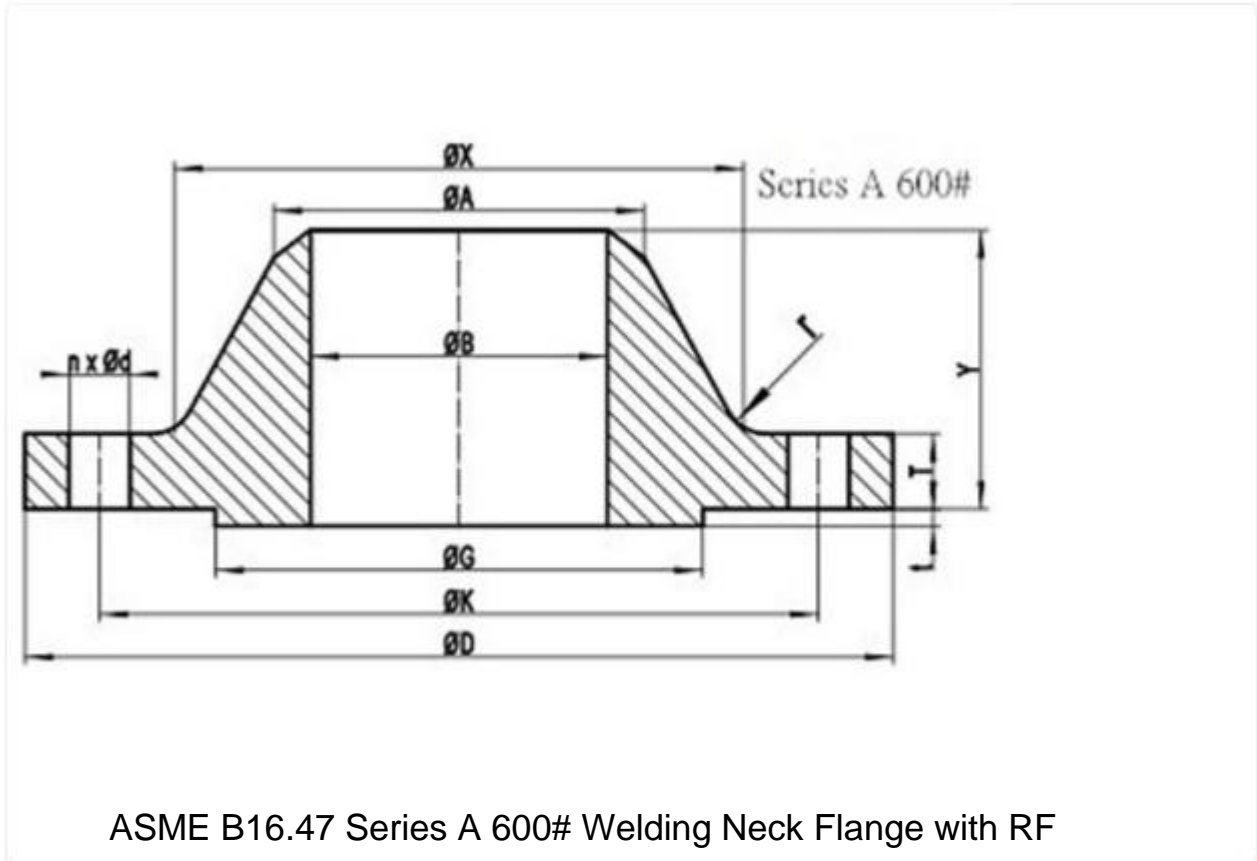
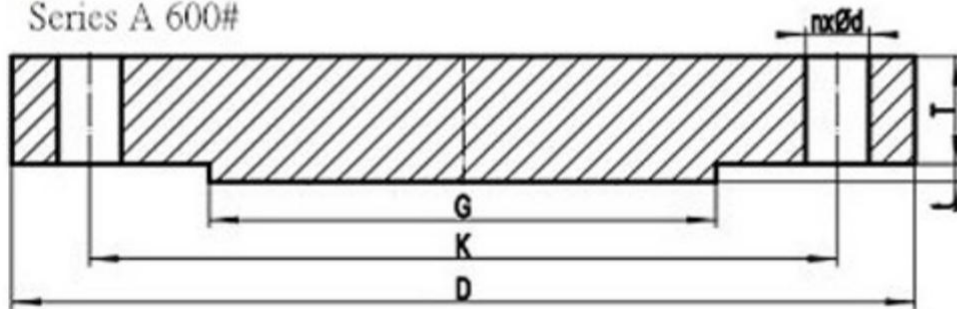


ASME B16 47 Class 600 Series A Flange

ASME B16.47 SERIES A FLANGES CLASS 600 DIMENSIONS AND TECHNICAL DRAWINGS



Series A 600#



ASME B16.47 Series A Class 600 Blind Flange with RF

600# B16.47 SERIES A FLANGES DIMENSIONS

B16.47 DIMENSIONS IN MM

NPS	D	K	G	X
26"	1015	914.4	749	748
28"	1075	965.2	800	803
30"	1130	1022.4	857	862
32"	1195	1079.5	914	918
34"	1245	1130.3	965	973
36"	1315	1193.8	1022	1032
38"	1270	1162.0	1054	1022
40"	1320	1212.8	1111	1073
42"	1405	1282.7	1168	1127
44"	1455	1333.5	1226	1181
46"	1510	1390.6	1276	1235
48"	1595	1460.5	1334	1289
50"	1670	1524.0	1384	1343
52"	1720	1574.8	1435	1394
54"	1780	1632.0	1492	1448
56"	1855	1695.4	1543	1502
58"	1905	1746.2	1600	1553

NPS	D	K	G	X
60"	1995	1822.4	1657	1610

General Note:

- All dimensions are in MM.
- D: outside diameter of fange.
- K: diameter of bolt circle.
- G: diameter of raised face.
- X: diameter of hub of fange.

NPS	A	TBL	TWN	Y
26"	660.4	125.5	108.0	222
28"	711.2	131.8	111.2	235
30"	762.0	139.7	114.3	248
32"	812.8	147.7	117.5	260
34"	863.6	154.0	120.7	270
36"	914.4	162.0	123.9	283
38"	965.2	155.0	152.4	254
40"	1016.0	162.0	158.8	264
42"	1066.8	171.5	168.3	279
44"	1117.6	177.8	173.1	289
46"	1168.4	185.8	179.4	300
48"	1219.2	195.3	189.0	316
50"	1270.0	203.2	195.9	329
52"	1320.8	209.6	203.2	337
54"	1371.6	217.5	209.6	349
56"	1422.4	225.5	217.5	362
58"	1473.2	231.8	222.3	370
60"	1524.0	242.9	233.4	389

General Note:

- All dimensions are in MM.
- A: Diameter of hub top of WN.
- TBL: minimum thickness of blind fange.
- TWN: minimum thickness of WN fange.
- Y: length through hub of WN.
t: 7mm height of RF for Class 600 Series A fange.

NPS	n	d	l	r
26"	28	2	1-7/8	13
28"	28	2-1/8	2	13
30"	28	2-1/8	2	13
32"	28	2-3/8	2-1/4	13
34"	28	2-3/8	2-1/4	14
36"	28	2-5/8	2-1/2	14
38"	28	2-3/8	2-1/4	14
40"	32	2-3/8	2-1/4	14
42"	28	2-5/8	2-1/2	14
44"	32	2-5/8	2-1/2	14
46"	32	2-5/8	2-1/2	14
48"	32	2-7/8	2-3/4	14
50"	28	3-1/8	3	14
52"	32	3-1/8	3	14
54"	32	3-1/8	3	14
56"	32	3-3/8	3-1/4	16
58"	32	3-3/8	3-1/4	16
60"	28	3-5/8	3-1/2	17

General Note:

- n: number of bolt holes.
- d: diameter of bolt hole.
- l: diameter of bolt.
- r: minimum fillet radius for WN.
- d and l are in inch units, while r is in mm unit.

ASME B16.47 SERIES A CLASS 600 FLANGES INDUSTRIES AND APPLICATIONS

WIDELY USED IN THE INDUSTRIES

- Pumps, Valves, and vessels in manufacturing and food processing.
- Pipe connections in industrial waterworks.
- Heat exchangers and heating systems of all sizes.
- Mining support.
- Nuclear power systems.
- Plumbing and mechanical systems.
- Assemblies in the oil, gas, and petrochemical industries.
- Fire protection systems.