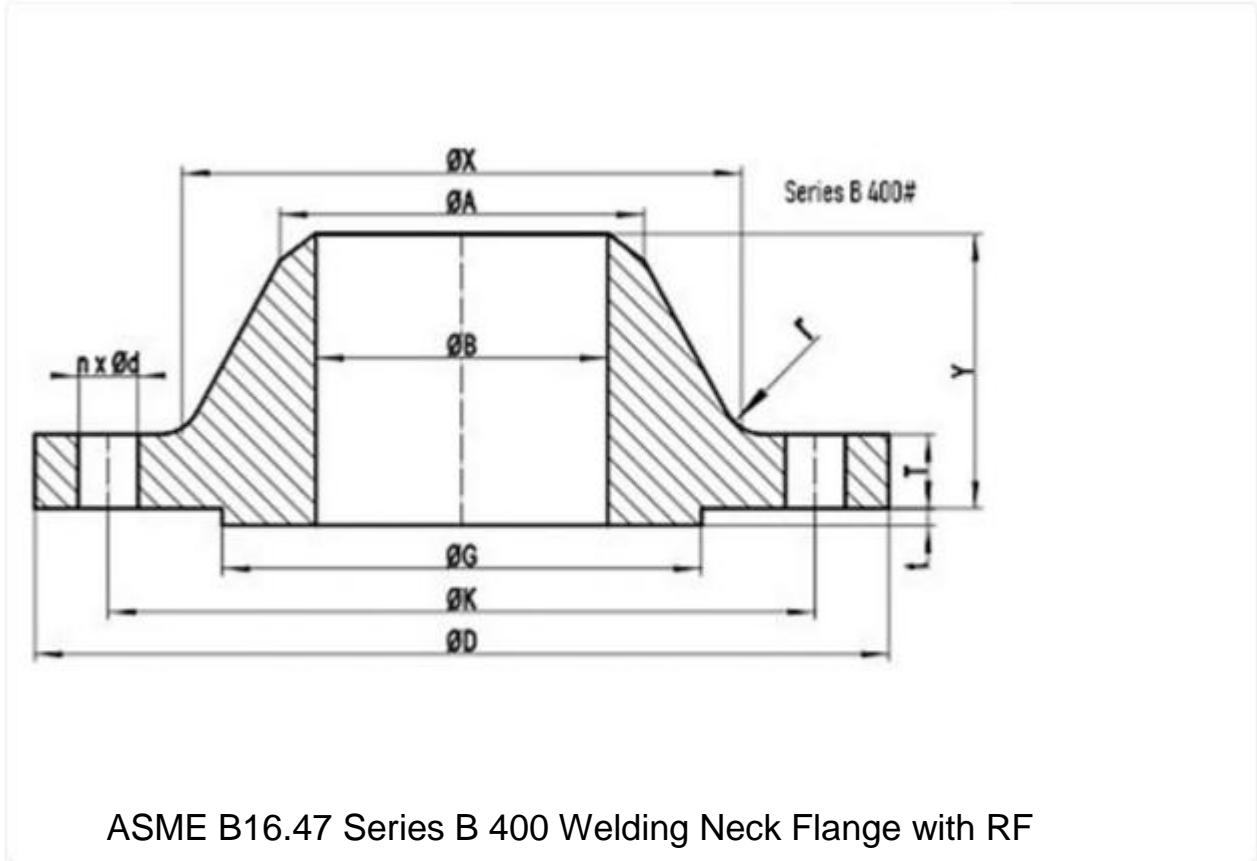
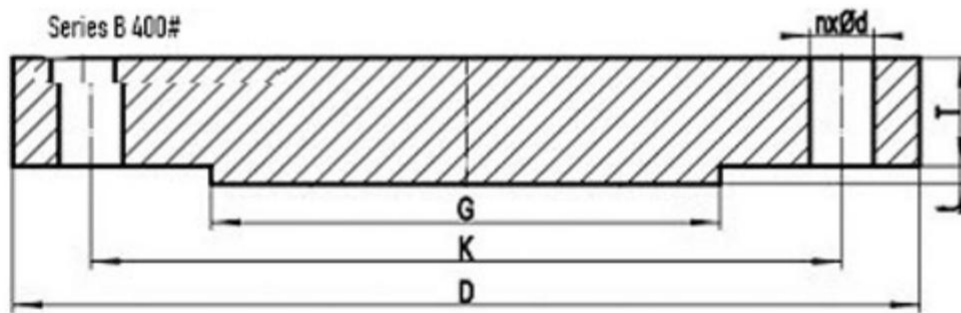


ASME B16 47 Class 400 Series B Flange

ASME B16.47 SERIES B FLANGES CLASS 400 DIMENSIONS AND TECHNICAL DRAWINGS





ASME B16.47 Series B Class 400 Blind Flange with RF

400# B16.47 SERIES B FLANGES DIMENSIONS

B16.47 DIMENSIONS IN MM

NPS	D	K	G	X
26	850	781.0	711	689
28	915	838.2	762	740
30	970	895.4	819	794
32	1035	952.5	873	845
34	1085	1003.3	927	899
36	1155	1066.8	981	952

General Note:

- All dimensions are in MM.
- D: outside diameter of fange.
- K: diameter of bolt circle.
- G: outside diameter of raised face.
- X: diameter of hub of WN flange.

NPS	A	TBL	TWN	Y
26	660.4	88.9	88.9	149
28	711.2	95.3	95.3	159
30	762.0	101.6	101.6	170

NPS	A	TBL	TWN	Y
32	812.8	108.0	108.0	179
34	863.6	111.2	111.2	187
36	914.4	119.1	119.1	200

General Note:

- All dimensions are in MM.
- A: Diameter of hub top of WN.
- TBL: minimum thickness of blind fange.
- TWN: minimum thickness of WN fange.
- Y: length through hub of WN.
- t: 7mm height of RF for Class 400 Series B flange.

NPS	n	d	l	r
26	28	1-1/2	1-3/8	11
28	24	1-5/8	1-1/2	13
30	28	1-5/8	1-1/2	13
32	28	1-3/4	1-5/8	13
34	32	1-3/4	1-5/8	14
36	28	1-7/8	1-3/4	14

General Note:

- n: number of bolt holes.
- d: diameter of bolt hole.
- l: diameter of bolt.
- r: minimum fillet radius for WN.
- d and l are in inch units, while r is in mm unit.

ASME B16.47 SERIES B CLASS 400 FLANGES INDUSTRIES AND APPLICATIONS

WIDELY USED IN THE INDUSTRIES

- Pumps, Valves and vessels in manufacturing and food processing.
- Pipe connections in industrial waterworks.
- Heat exchangers and heating systems of all sizes.
- Mining support.
- Nuclear power systems.
- Plumbing and mechanical systems.
- Assemblies in the oil, gas, and petrochemical industries.
- Fire protection systems.