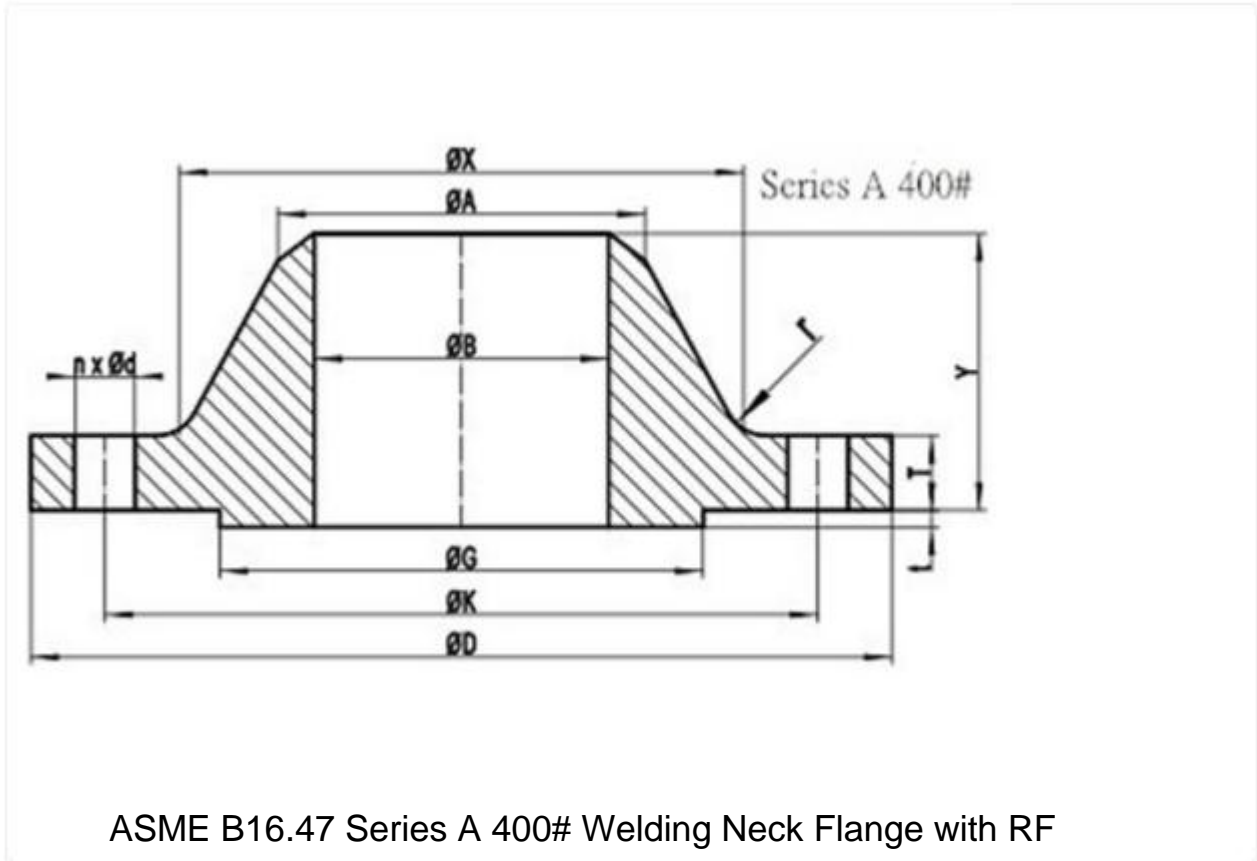
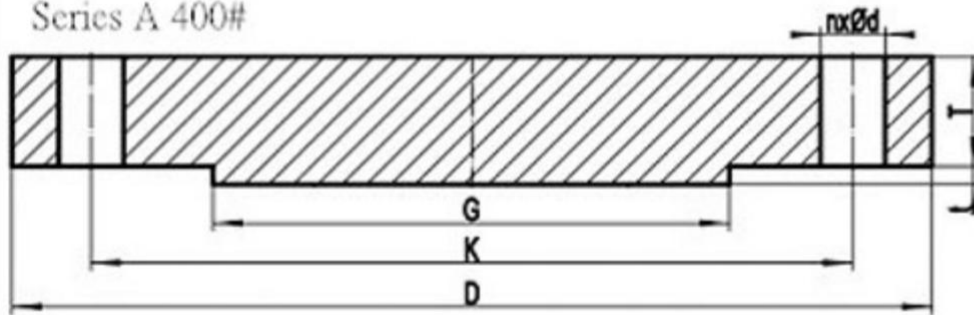


ASME B16 47 Class 400 Series A Flange

ASME B16.47 SERIES A FLANGES CLASS 400 DIMENSIONS AND TECHNICAL DRAWINGS



Series A 400#



ASME B16.47 Series A Class 400 Blind Flange with RF

400# B16.47 SERIES A FLANGES DIMENSIONS

B16.47 DIMENSIONS IN MM

NPS	D	K	G	X
26"	970	876.3	749	727
28"	1035	939.8	800	783
30"	1090	997.0	857	837
32"	1150	1054.1	914	889
34"	1205	1104.9	965	945
36"	1270	1168.4	1022	1000
38"	1205	1117.6	1035	1003
40"	1270	1174.6	1092	1054
42"	1320	1225.6	1143	1108
44"	1385	1282.7	1200	1159
46"	1440	1339.8	1257	1213
48"	1510	1403.4	1308	1267
50"	1570	1460.5	1362	1321
52"	1620	1511.3	1413	1372
54"	1700	1581.2	1470	1426
56"	1755	1632.0	1527	1480
58"	1805	1682.8	1578	1530

NPS	D	K	G	X
60"	1885	1752.6	1635	1584

General Note:

- All dimensions are in MM.
- D: outside diameter of fange.
- K: diameter of bolt circle.
- G: diameter of raised face.
- X: diameter of hub of fange.

NPS	A	TBL	TWN	Y
26"	660.4	98.5	88.9	194
28"	711.2	104.8	95.3	206
30"	762.0	111.2	101.6	219
32"	812.8	115.9	108.0	232
34"	863.6	122.3	111.2	241
36"	914.4	128.6	114.3	251
38"	965.2	123.9	123.9	206
40"	1016.0	130.2	130.2	216
42"	1066.8	133.4	133.4	224
44"	1117.6	139.7	139.7	233
46"	1168.4	146.1	146.1	244
48"	1219.2	152.4	152.4	257
50"	1270.0	158.8	157.2	268
52"	1320.8	163.6	162.0	276
54"	1371.6	171.5	169.9	289
56"	1422.4	176.3	174.7	298
58"	1473.2	181.0	177.8	306
60"	1524.0	189.0	185.8	319

General Note:

- All dimensions are in MM.
- A: Diameter of hub top of WN.
- TBL: minimum thickness of blind fange.
- TWN: minimum thickness of WN fange.
- Y: length through hub of WN.
t: 7mm height of RF for Class 400 Series A fange.

NPS	n	d	l	r
26"	28	1-7/8	1-3/4	11
28"	28	2	1-7/8	13
30"	28	2-1/8	2	13
32"	28	2-1/8	2	13
34"	28	2-1/8	2	14
36"	32	2-1/8	2	14
38"	32	1-7/8	1-3/4	14
40"	32	2	1-7/8	14
42"	32	2	1-7/8	14
44"	32	2-1/8	2	14
46"	36	2-1/8	2	14
48"	28	2-3/8	2-1/4	14
50"	32	2-3/8	2-1/4	14
52"	32	2-3/8	2-1/4	14
54"	28	2-5/8	2-1/2	14
56"	32	2-5/8	2-1/2	14
58"	32	2-5/8	2-1/2	14
60"	32	2-7/8	2-3/4	14

General Note:

- n: number of bolt holes.
- d: diameter of bolt hole.
- l: diameter of bolt.
- r: minimum fillet radius for WN.
- d and l are in inch units, while r is in mm unit.

ASME B16.47 SERIES A CLASS 400 FLANGES INDUSTRIES AND APPLICATIONS

WIDELY USED IN THE INDUSTRIES

- Pumps, Valves, and vessels in manufacturing and food processing.
- Pipe connections in industrial waterworks.
- Heat exchangers and heating systems of all sizes.
- Mining support.
- Nuclear power systems.
- Plumbing and mechanical systems.
- Assemblies in the oil, gas, and petrochemical industries.
- Fire protection systems.