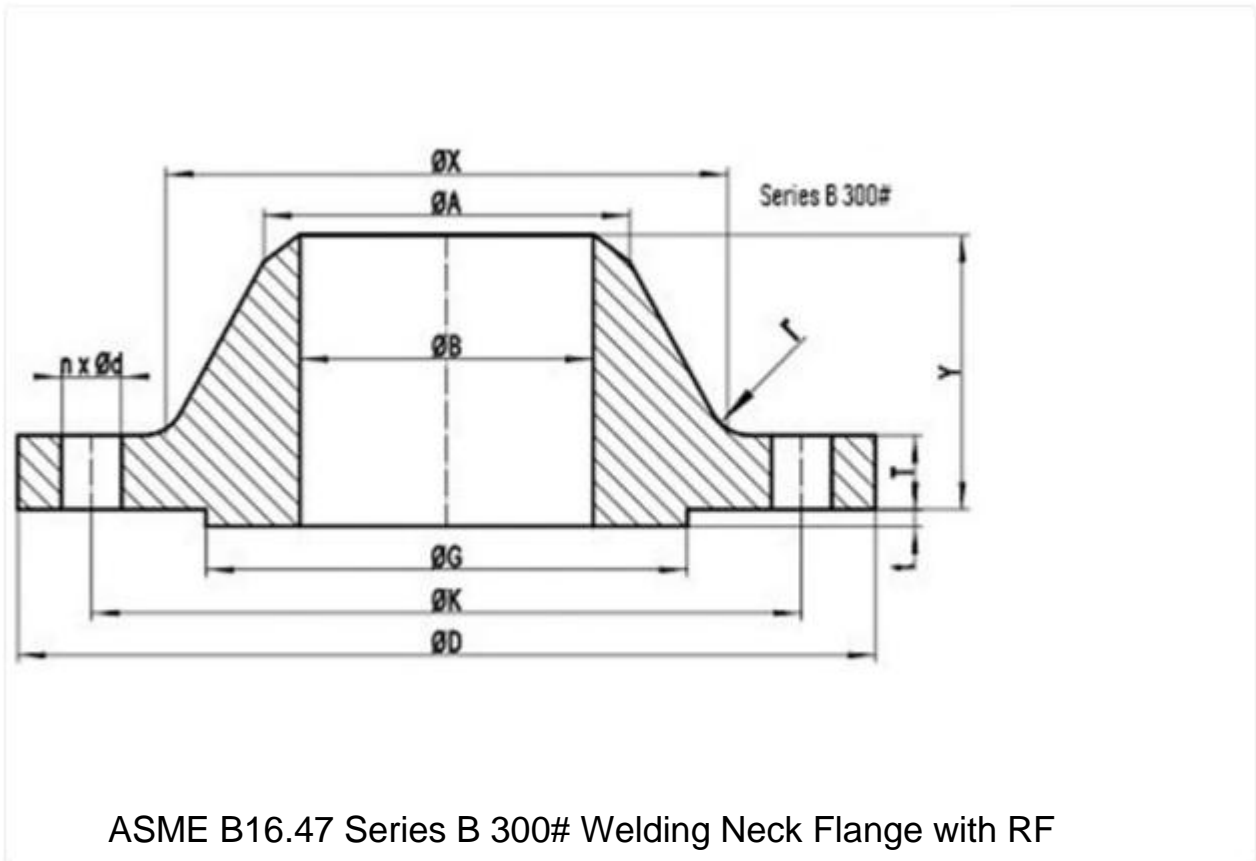
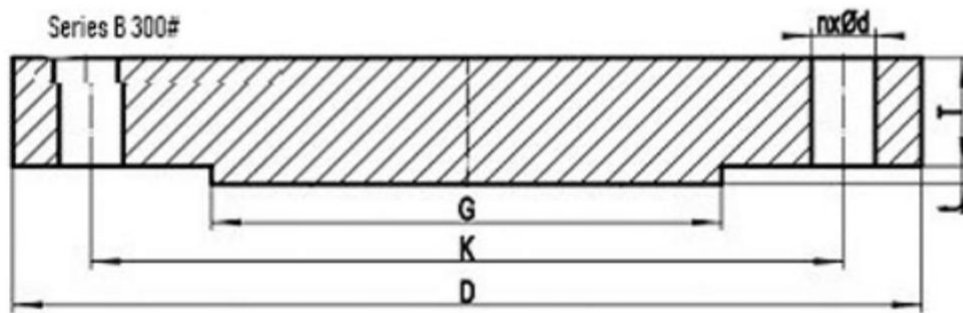


ASME B16 47 Class 300 Series B Flange

ASME B16.47 SERIES B FLANGES CLASS 300 DIMENSIONS AND TECHNICAL DRAWINGS





ASME B16.47 Series B Class 300 Blind Flange with RF

300# B16.47 SERIES B FLANGES DIMENSIONS

B16.47 DIMENSIONS IN MM

NPS	D	K	G	X
26	865	803.3	737	702
28	920	857.2	787	756
30	990	920.8	845	813
32	1055	977.9	902	864
34	1110	1031.9	953	918
36	1170	1089.0	1010	965
38	1220	1139.8	1060	1016
40	1275	1190.6	1114	1067
42	1335	1244.6	1168	1118
44	1385	1295.4	1219	1173
46	1460	1365.2	1270	1229
48	1510	1416.0	1327	1278
50	1560	1466.8	1378	1330
52	1615	1517.6	1429	1383
54	1675	1578.0	1480	1435
56	1765	1651.0	1537	1494
58	1825	1712.9	1594	1548

NPS	D	K	G	X
60	1880	1763.7	1651	1599

General Note:

- All dimensions are in MM.
- D: outside diameter of fange.
- K: diameter of bolt circle.
- G: outside diameter of raised face.
- X: diameter of hub of WN fange.

NPS	A	TBL	TWN	Y
26	665.2	87.4	87.7	143
28	716.0	87.4	87.4	148
30	768.4	92.1	92.1	156
32	819.2	101.6	101.6	167
34	870.0	101.6	101.6	171
36	920.8	101.6	101.6	179
38	971.6	109.6	109.6	191
40	1022.4	114.3	114.3	197
42	1074.7	117.5	117.5	203
44	1125.5	125.5	125.5	213
46	1176.3	128.6	127.0	221
48	1227.1	133.4	127.0	222
50	1277.9	138.2	136.6	233
52	1328.7	142.6	141.3	241
54	1379.5	147.7	135.0	238
56	1430.3	155.4	152.4	267
58	1481.1	160.4	152.4	273
60	1531.9	165.1	149.3	270

General Note:

- All dimensions are in MM.
- A: Diameter of hub top of WN.
- TBL: minimum thickness of blind fange.
- TWN: minimum thickness of WN fange.
- Y: length through hub of WN.
t: 2mm height of RF for Class 300 Series B fange.

NPS	n	d	l	r
26	32	1-3/8	1-1/4	14
28	36	1-3/8	1-1/4	14
30	36	1-1/2	1-3/8	14
32	32	1-5/8	1-1/2	16
34	36	1-5/8	1-1/2	16
36	32	1-3/4	1-5/8	16
38	36	1-3/4	1-5/8	16
40	40	1-3/4	1-5/8	16
42	36	1-7/8	1-3/4	16
44	40	1-7/8	1-3/4	16
46	36	2	1-7/8	16
48	40	2	1-7/8	16
50	44	2	1-7/8	16
52	48	2	1-7/8	16
54	48	2	1-7/8	16
56	36	2-3/8	2-1/4	17
58	40	2-3/8	2-1/4	17
60	40	2-3/8	2-1/4	17

General Note:

- n: number of bolt holes.
- d: diameter of bolt hole.
- l: diameter of bolt.
- r: minimum fillet radius for WN.
- d and l are in inch units, while r is in mm unit.

ASME B16.47 SERIES B CLASS 300 FLANGES INDUSTRIES AND APPLICATIONS

WIDELY USED IN THE INDUSTRIES

- Pumps, Valves, and vessels in manufacturing and food processing.
- Pipe connections in industrial waterworks.
- Heat exchangers and heating systems of all sizes.
- Mining support.
- Nuclear power systems.
- Plumbing and mechanical systems.
- Assemblies in the oil, gas, and petrochemical industries.
- Fire protection systems.